

#PWAExpo



PORTLANDWORKFORCEALLIANCE
PWORKFORCEA



NORTHWEST
**YOUTH
CAREERS
EXPO**

2025 RESOURCE GUIDE



Wednesday, March 19, 2025

9:00 am – 1:30 pm • Oregon Convention Center

[PORTLANDWORKFORCEALLIANCE.ORG/EXPO](https://portlandworkforcealliance.org/expo)

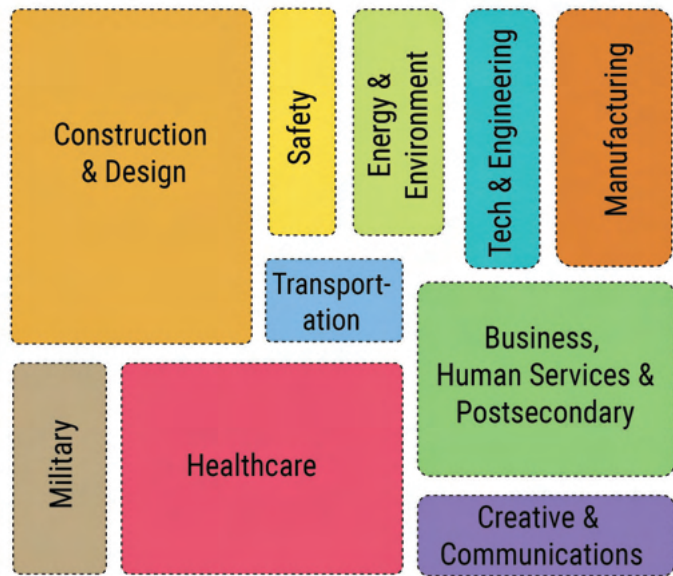


EXPO MAP KEY

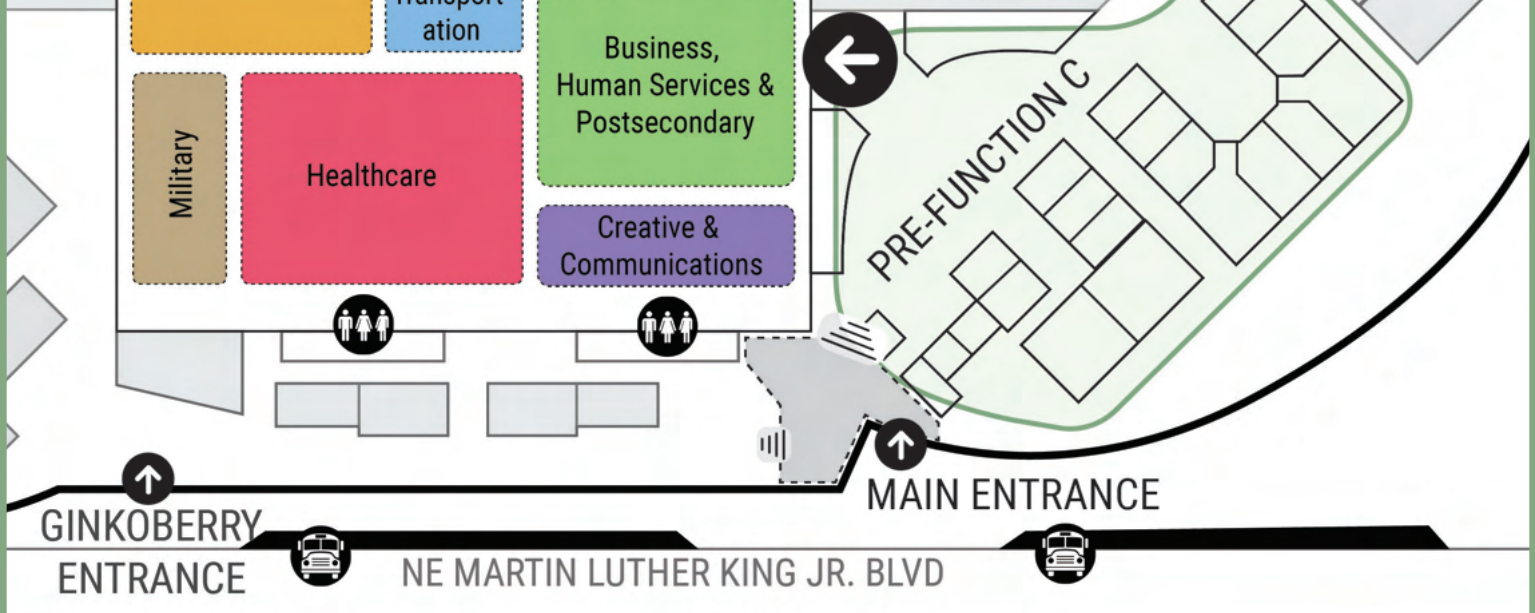
- EXPO ENTRANCE AT EXHIBIT HALL C
- CHECK IN INFORMATION DESK
- MOCK INTERVIEWS CAREER TALKS
- QUIET MOCKS BUS PULL-IN ZONE
- CHILL ROOM
The chill room is a quiet space for students to take a sensory break during the Expo.



EXHIBIT HALL



GET IN THE ZONE!
To help you get around, the Expo Hall is divided into **ZONES**. Each Zone showcases major industries and career paths



WELCOME TO THE 2025 NW YOUTH CAREERS EXPO! This is your chance to explore careers at leading companies and colleges. You can talk to caring professionals about their jobs and the many college and career choices after graduation. Visit 200+ booths organized into different industry zones; many will have equipment and fun activities for you to try!

WELCOME TO THE 21ST ANNUAL NW YOUTH CAREERS EXPO

The annual **NW YOUTH CAREERS EXPO** is the Northwest’s premier career exploration experience. The **EXPO** shows students the region’s amazing diversity of career opportunities, and offers information on the skills and education needed for those jobs.

The **EXPO** connects employers to their future workforce and helps students make informed, inspired decisions about their education after high school – whether they choose college, an apprenticeship or other training.

THANK YOU to our sponsors, exhibitors and high schools for making the annual **NW YOUTH CAREERS EXPO** a success!

CONNECT WITH PWA



PORTLANDWORKFORCEALLIANCE
PWORKFORCEA

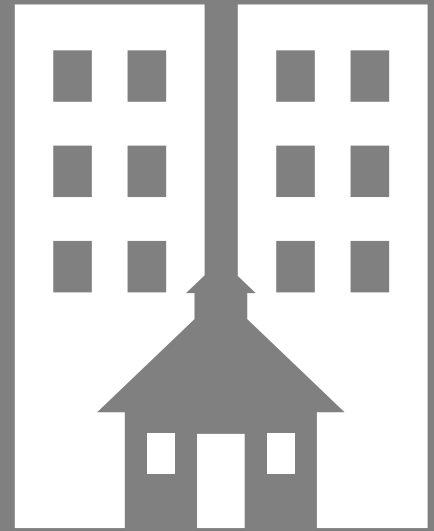
Share your photos! #PWAExpo #MyPWA

TABLE OF CONTENTS

GUIDE FOR TALKING TO EXHIBITORS.....	3
MOCK INTERVIEWS & CAREER TALKS.....	4
MAP OF EXHIBIT HALL.....	5
EXHIBITORS by Career Pathway.....	6
EXHIBITORS Alphabetically.....	12
PARTICIPATING SCHOOLS.....	32
ALL SPONSORS.....	Back Cover

EXPO SPONSOR FEATURES

Andersen Construction.....	27	Frontier Senior Living.....	24
City of Portland.....	10	OHSU.....	11
Fortis Construction.....	26	Pacific Power.....	28
Hoffman Construction.....	25	Performance Contracting Inc.....	27
Howard S. Wright.....	29	Portland Community College.....	22
Gee Automotive Companies.....	25	Portland General Electric.....	15
Intel.....	29	Port of Portland.....	16
IUOE Local 701.....	21	Prosper Portland.....	17
Kaiser Permanente.....	26	Skanska USA.....	27
Legacy Health.....	19	Sundt Construction.....	29
Mt. Hood Community College.....	9	Sumner College.....	25
NW Natural.....	24	The Oregonian.....	23
OEG, Inc.....	28	Umpqua Bank.....	20
Oh planning+design, architecture.....	28	U.S. Army.....	12
OnPoint Community Credit Union.....	8	U.S. Army ROTC.....	24
Oregon & S. Idaho Laborers			
Employers Training Trust.....	18		
Oregon Bankers Education Foundation.....	29		



PWA

PORTLAND WORKFORCE
ALLIANCE

**BIG DREAMS. GOOD JOBS.
ALL STUDENTS.**

The Portland Workforce Alliance is an independent nonprofit that sees access to meaningful career exploration for high school students as a matter of social and economic justice.

We work with local employers and schools to educate students about career opportunities as part of a strategy to help students thrive after graduation and contribute to a resilient, prosperous and well-educated workforce.

Along with the Expo, PWA facilitates Career Days, mentorships, mock interviews and more.

**LEARN MORE AT
PORTLANDWORKFORCEALLIANCE.ORG**

MOCK INTERVIEWS

Practice Your Job Interviewing Skills

WHEN: 9am to 1:30pm
WHERE: Rooms C123+124

One-on-one, 10-minute mock interview and feedback from a caring professional. Resumes welcome and strongly encouraged. Students will receive a completed feedback form.

Demand is high! Limited drop-ins are allowed. If lines are long, students can visit the Resume Review Station or attend a nearby **CAREER TALK**.

CAREER TALKS

How to Ace Your Job Interview

WHEN: 9:30am | 10:30am | 11:30am | 12:30pm
WHERE: C120 Meeting Room

What employers ask, how to prepare for an interview and how to follow up.

How to Land a Job

WHEN: 10:00am | 11:00am | 12:00pm | 1:00pm
WHERE: C120 Meeting Room

An overview of all it takes to land a job: resumes, networking and interviewing.

25-minute group sessions designed to boost students' career readiness. Students will receive Certificates of Completion. Drop-ins are welcome!

Networking Essentials

WHEN: 10:30am | 11:30am
WHERE: C121 Meeting Room

It's all about making connections.

Tips for Starting Your Business

WHEN: 10:00am | 11:00am
WHERE: C121 Meeting Room

Presented by UPLIFT Leadership.

Managing Your Paycheck

WHEN: 12:00pm
WHERE: C120 Meeting Room

Smart money tips, presented by OnPoint Community Credit Union.

Welcome high schools to the 2025 NW Youth Careers Expo

Special thanks to our partner school districts



Big dreams. Good jobs. All students.

Join us! Learn how to get involved at PORTLANDWORKFORCEALLIANCE.ORG



**NORTHWEST
YOUTH
CAREERS
EXPO**
MARCH 19, 2025



MOCK INTERVIEWS & CAREER TALKS

Try a one-on-one interview with a business professional or attend a 25-minute career talk to learn tips on landing a job!

	ROOM	9:00	9:30	10:00	10:30	11:00	11:30	12:00	12:30	1:00	1:30
Mock Interviews	C124 C123	9:00 - 1:30									
How to Ace Your Job Interview	C120		9:30		10:30		11:30		12:30		
How to Land a Job	C120			10:00		11:00		12:00		1:00	
Networking Essentials	C121				10:30		11:30				
Tips for Starting Your Business	C121			10:00		11:00					
Managing Your Paycheck: Smart Money Tips <small>by OnPoint Community Credit Union</small>	C120							12:00			



INTERESTED IN A SUMMER JOB OR INTERNSHIP?

Look for the lightbulb signs in the exhibit hall to learn which companies have job or volunteer opportunities!



NEED A BREAK?

Visit the quiet, sensory space in C125

WANT TO LEARN MORE ABOUT A CAREER? JUST ASK.

GUIDE FOR TALKING TO EXHIBITORS



Career Path & Workplace

Why did you choose your career path?

What is a typical day like for you or your coworkers?

How would you describe your work environment?

Organization

What do you want people to know about your business or organization?

How is it growing or changing?

What kinds of jobs are you hiring for now? How about 3-5 years from now?

Education & Skills

What kind of education and training did you need for your job?

Are there colleges or programs you recommend for this field?

What are the top 3 skills you use on a day-to-day basis?

Salary & Rewards

What can people expect to earn in entry-level jobs in this field?

What do you enjoy most about your job, and what do you find the most challenging?

Does this job allow for a good work-life balance?

Advice for the Future

What are the best opportunities for someone entering this field?

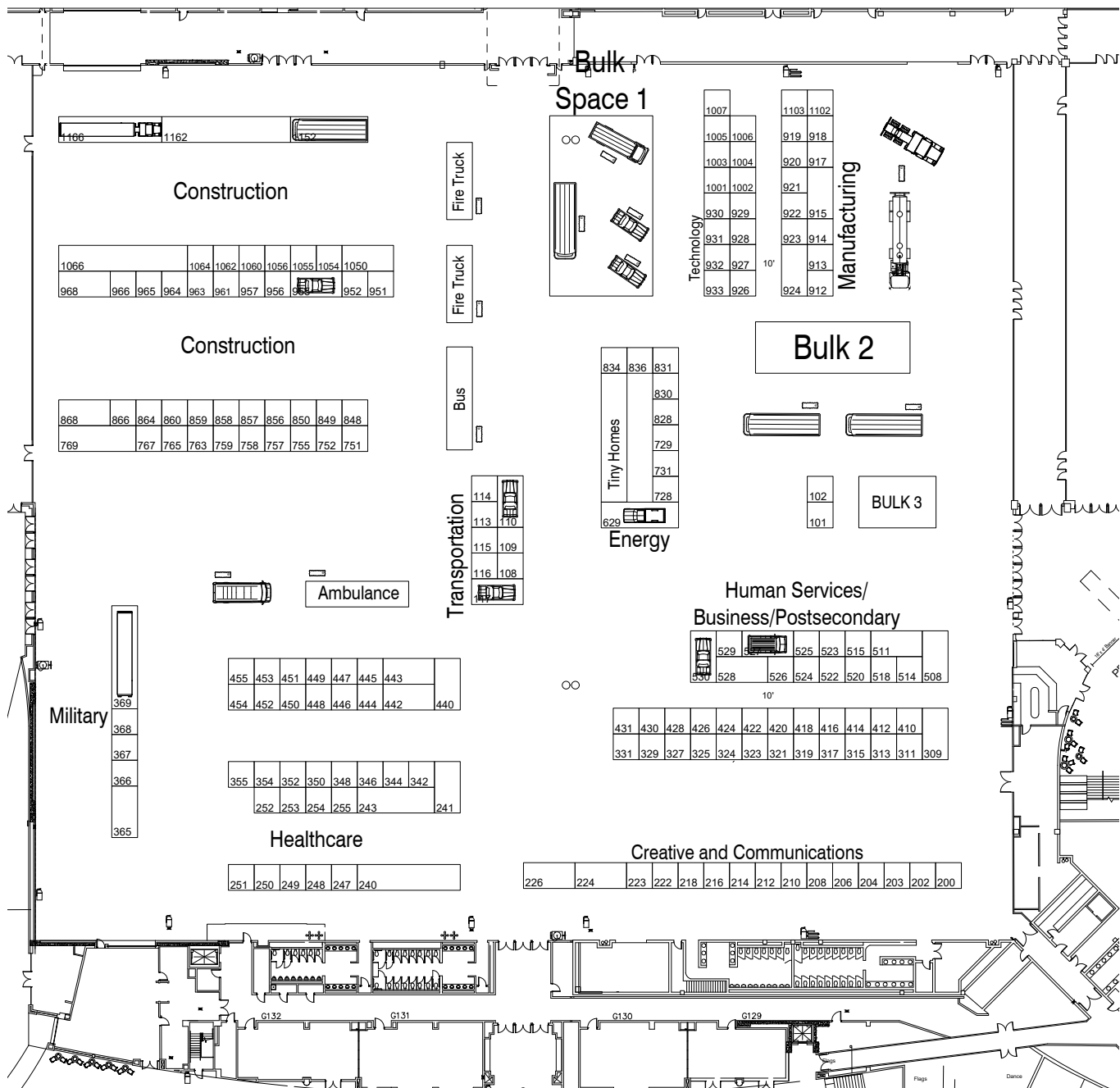
Are there any trends in your industry you're excited about?

Does your workplace have any internship or apprenticeship opportunities?

Does your workplace offer job shadowing opportunities?

MAP OF EXHIBIT HALL

HALL C-D



CAREER PATHWAYS

- BUSINESS
- CREATIVE & COMMUNICATIONS
- CONSTRUCTION & DESIGN
- ENERGY & ENVIRONMENT
- HEALTHCARE
- HUMAN SERVICES

- MANUFACTURING
- MILITARY
- POSTSECONDARY
- SAFETY
- TECHNOLOGY & ENGINEERING
- TRANSPORTATION

EXHIBITORS (By Career Pathway)*As of March 10, 2025***BUSINESS**

311	Portland Timbers / Providence Park
327	UPLIFT Leadership
331	Made in Old Town
424	Mt. Hood Community College- Business and Computer Information Systems
428	Chemeketa Community College- Hospitality and Tourism Management
430	Oregon Restaurant and Lodging Association
508	OnPoint Community Credit Union
515	Umpqua Bank
520	CREW Portland
525	Bank of America
526	Oregon State Bar
528	The Real Life
530	Gee Automotive Companies

CREATIVE & COMMUNICATIONS

200	Summit Salon Academy
202	Portland Fashion Institute
203	Northwest College School of Beauty
204	Shadow Machine
206	Oregon Film: Koerner Camera Systems
208	LAIKA Studios
210	BPN Inc.
212	Coates Kokes
214	Upswell
216	Intuitive Digital
218	Mt. Hood Community College- Arts/Creative Instruction
222	Printing Industries Association
223	Portland Community College: Theater & Music
224	Oregonian Media Group
226	Wieden+Kennedy

CONSTRUCTION & DESIGN

751	Bassetti Architects
752	GreenWorks PC
758	Apollo Mechanical
755	International Interior Design Association - Oregon Chapter
757	Clackamas Community College - Horticulture
759	RDO Equipment Co.
763	Glaziers Apprenticeship
765	Area 1 Inside Electrical JATC
767	UA Local 669 Fire Sprinkler Fitters JATC
769	Regional Training Center
848	Fortis Construction Inc.
849	OEG, Inc.
850	Andersen Construction
856	Northwest College of Construction
857	LMC Construction
858	POIC
859	Oregon Chapter of the American Society of Landscape Architects
860	James W. Fowler Co.
864	NECA-IBEW Electrical Training Center
866	NARI Pacific NW
868	National Association of Minority Contractors
951	Hoffman Construction
952	Sundt Construction

955	Skanska USA
956	Tapani Inc.
957	RJ Ramos
961	Walen Construction
963	ACE Mentor Program of Oregon
964	Inline Construction
965	Cherry City Electric
966	Professional Land Surveyors of Oregon
968	Performance Contracting, Inc.
1050	Oh planning+design, architecture
1054	Howard S. Wright
1055	Lease Crutcher Lewis, LLC - Portland, OR
1056	R&H Construction
1060	Viking Automatic Sprinkler Company
1062	Area I Plumbers
1064	Area I Sign Installers
1066	RiverBend Materials
1152	Oregon & S. Idaho Laborers Employers Training Trust (LIUNA Local 737)
1162	IUOE Local 701
1166	Glacier NW

ENERGY & ENVIRONMENT

729	Oregon Solar + Storage Industries Association
731	Pacific Power
828	Pacific Northwest Clean Water Association
830	Mt. Hood Community College- Natural Resources and Fisheries
831	Oregon State University College of Forestry/ College of Earth, Ocean, and Atmospheric Sciences (CEOAS)
834	Earth Advantage & EnerCity Collaborative
836	NW Natural
629, 728	Portland General Electric
Bulk	City of Portland: Bureau of Environmental Services
Bulk	City of Portland: Water Bureau

HEALTHCARE

240	Portland Community College- Healthcare & Emergency Professions
241	Kaiser Permanente
243	Providence Health
247	Alliance of Black Nurses Association of Oregon
248	Genentech
249	Oregon Bio
250	Pacific University
251	Beaverton Oral Surgeons
252	Virginia Garcia Memorial Health Center
253	Sumner College
254	College of Pharmacy, Oregon State University
255	Mt. Hood Community College- Healthcare Instruction
342	Frontier Senior Living
344	Avamere Living
346	Fresenius Medical Care
348	Marquis Companies & Consonus Healthcare & AgeRight
350	RISE Partnership
352	Oregon Care Careers
354	OHSU Pharmacy Tech Program

355	OHSU Talent Acquisition	Bulk	Portland Community College- Welding
440	Legacy Health		
442	Oregon Area Health Education Center (AHEC)		
443	Peacehealth		
444	OHSU Center for Learner Diversity and Inclusion		
445	Oregon National Primate Research Center		
446	Oregon Institute of Technology		
447	OHSU Radiation Therapy Program, OHSU Medical Physics Program		

448	OHSU/OIT Medical Laboratory Science		
449	OHSU School of Nursing		
450	OHSU MD Program		
451	OHSU Knight Cancer Institute Cancer Research Training & Education		
452	OHSU-PSU School of Public Health		
453	OHSU Graduate Programs in Human Nutrition		
454	OHSU Physician Assistant Program		
455	OHSU School of Dentistry Student Admissions		
Bulk	OHSU Knight Cancer Institute Community Outreach and Engagement – Mobile Outreach		
Bulk	OHSU/OIT Paramedic and EMTs		

MILITARY

365	US Army ROTC
366	U.S. Marine Corps
367	Oregon Army National Guard
368	US Navy
369	US Army

POSTSECONDARY

309	Portland Community College
410	Portland Community College: Career Pathways and STEP Program
412	HECC/Office of Student Access & Completion
414	Linfield University
416	ECMC The College Place Oregon
418	Portland State University: Admissions
420	Southern Oregon University
422	University of Oregon
426	Portland State University: Business
511	Mt. Hood Community College

SAFETY

109	Transportation Security Administration
114	Clackamas Community College - Wildland Fire and GIS
Bulk	Hillsboro Fire & Rescue
Bulk	Portland Fire & Rescue

TECHNOLOGY & ENGINEERING

926	Intel
927	PCC Microelectronics Technology
928	Portland Community College: Computing & Engineering
929	Oregon Cybersecurity Center of Excellence
930	Oregon State University: College of Engineering
931	MECOP, Inc.
932	Lease Crutcher Lewis
933	City of Portland: Bureau of Technology Services
1001	Portland Public Schools: Office of Technology & Information Services
1002	Society of Women Engineers (SWE)
1003	Portland State University: Electrical & Computer Engineering; Computer Science
1004	State of Oregon DEQ Environmental Laboratory and State Public Health Laboratory
1005	Portland State University: Civil & Environmental Engineering; Mechanical & Materials Engineering
1006	Portland Community College: Geography & GIS Technologies
1007	Oregon Institute of Technology

TRANSPORTATION

108	Hillsboro Aero Academy
110	Clackamas Community College - Industrial Technology and Automotive
113	Maletis Beverage
115	Omega Morgan
116	Oak Harbor Freight Lines
117	Lithia & Driveway
Bulk	C-TRAN
Bulk	Port of Portland
Bulk	City of Portland: Bureau of Transportation
Bulk	TriMet

HUMAN SERVICES

101	Portland Parks & Recreation
102	City of Portland: We Are Better Together, Bureau of Human Resources, Bureau of Planning & Sustainability
313	Pedalheads Bike Camps Inc.
315	Mt. Hood Kiwanis Camp
317	Oregon Humane Society
319	Options Counseling and Family Services
321	Oregon CTE Student Leadership Foundation
323	Greater Oregon Behavioral Health, Inc
324	Job Corps
325	Multnomah County
329	Built Oregon
426	Portland State University
431	YMCA of Columbia-Willamette
514	Oregon Institute of Technology
518	Oregon Employment Department Paid Leave
522	American Red Cross
523	Oregon Entrepreneurs Network
524	Metro
527	Tualatin Hills Park & Recreation District
529	City of Hillsboro - Parks & Recreation
Bulk	City of Portland: Urban Forestry

MANUFACTURING

912	The Boeing Company
913	International Aerospace Coatings (IAC)
914	Vigor Industrial LLC
915	Benchmade Knife Company
917	Reser's Fine Foods
918	Danner
919	Gunderson Marine LLC
920	PCC Machining Manufacturing Technology
921	PCC Oregon Manufacturing Innovation Center
922	PCC Electronics Engineering Technology
923	Jireh Semiconductor
924	Mt. Hood Community College- Automotive, Engineering, Machine Tool, Mechatronics and Welding
1102	KAI USA, Ltd: Kershaw, Zero Tolerance Knives & Shun
Bulk	Daimler Truck North America



HIGH-YIELD, BIG IMPACT

OnPoint Savers

Savings account for members 17 and younger.

Together, we'll help them save.

Your initial deposit of

\$25

(minimum opening deposit)

OnPoint's deposit of

\$55

(includes \$5 required minimum balance. New members only)

+ 5.00% APY*

on their first \$500



We've got great tools.

There's lots more to learn online at onpoint.enrich.org.



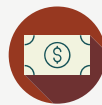
This is just the beginning.

Don't stop a good thing, encourage your child to make regular deposits.



Questions? Get in touch.

Call 503.228.7077 or 800.527.3932. Stop by. To find the nearest branch visit onpointcu.com/locations.



It all adds up.

Birthday check? Lawn mowing money? Have them take their money down to OnPoint and show them how it can grow.

Rates subject to change. Stated APY is for balances up to \$500; balances over \$500 earn posted Regular Savings Account rate. Account must be established for members age 17 or younger by parent or guardian with a minimum \$25 deposit. Parent or legal guardian must be on the membership and present to open the OnPoint Savers® Account. When primary member attains the age of 18, accounts will be converted to Regular Savings Account, earning that account's published rate at that time. Fiduciary memberships, including UTTMA and Minor Settlement Accounts are not eligible for OnPoint Savers®. One OnPoint Savers® Account per member/TIN. One \$55 bonus per tax ID for new members only. Bonus will be deposited to the new Savers account by the next business day and will be included on a 1099-INT for tax purposes. Cannot be combined with other offers for opening a new membership, such as new branch promotions or Refer a Friend.

The full account balance APY is calculated by combining the 5.00% APY earnings on the first \$500 with the standard APY on the remaining balance above \$500.

*APY=Annual Percentage Yield.

Federally insured by NCUA. Rev 01/24



MT. HOOD
COMMUNITY COLLEGE



It's Time to Elevate Your Future

Want a career but don't know where to start? At Mt. Hood Community College we offer a wide range of educational programs and provide the help you need to succeed. Find degrees in fast-growing fields like nursing, mechatronics, dental hygiene, and cybersecurity. Explore some of our specialty degrees like funeral services or fisheries. And with services like family support, technology assistance, housing and food assistance, and one-on-one counseling, we're committed to helping you reach your goals.

Visit mhcc.edu/GettingStarted to learn more.

MHCC is an EEO, Title IX, Title VI, Title VII, Title II, Section 504, ADA, ORS 659A Institution.

Areas of Study

Arts, Language, Media

Business, Accounting, Management

Computers, Cybersecurity,
Game Development

Education, Child Development

Engineering

Healthcare, Medical, Fitness

Industrial Technologies

Science and Nature Studies

Social Sciences and Social Services



City of Portland

Want to learn more about the City?
For more information contact People + Culture

Anabertha Owusu Bempah
We Are Better Together

5038656939 - anabertha.owusubempah@portlandoregon.gov

Bureau of Environmental Services

Bureau of Human Resources

Bureau of Planning & Sustainability

Bureau of Technology Services

Portland Fire & Rescue

Portland Parks & Recreation

Portland Water Bureau

Find your future here.




You are the health and science leaders of tomorrow. At Oregon Health & Science University, we'll help you get there.

Find your path in nursing, public health, medicine, dentistry, pharmacy, scientific research or one of our many other programs.

Learn more at ohsu.edu/education



 **U.S. ARMY**

Achieve without limits.

Without limits, what could you achieve? The U.S. Army gives you the tools you need to overcome obstacles and attain the future you want.



GOARMY.COM

EXHIBITORS (Alphabetically)

As of March 10, 2025

	A		
963	ACE Mentor Program of Oregon	951	Hoffman Construction
247	Alliance of Black Nurses Association of Oregon	1054	Howard S. Wright
522	American Red Cross		I
850	Andersen Construction	964	Inline Construction
758	Apollo Mechanical	926	Intel
765	Area 1 Inside Electrical JATC	913	International Aerospace Coatings (IAC)
1062	Area I Plumbers	755	International Interior Design Association - Oregon Chapter
1064	Area I Sign Installers	216	Intuitive Digital
344	Avamere Living	1162	IUOE Local 701
	B		J
525	Bank of America	860	James W. Fowler Co.
751	Bassetti Architects	923	Jireh Semiconductor
251	Beaverton Oral Surgeons	324	Job Corps
915	Benchmade Knife Company		K
210	BPN Inc.	1102	KAI USA, Ltd: Kershaw, Zero Tolerance Knives & Shun
329	Built Oregon	241	Kaiser Permanente
	C		L
Bulk	C-TRAN	208	LAIKA Studios
428	Chemeketa Community College- Hospitality and Tourism Management	932	Lease Crutcher Lewis
965	Cherry City Electric	1055	Lease Crutcher Lewis, LLC - Portland, OR
529	City of Hillsboro - Parks & Recreation	440	Legacy Health
Bulk	City of Portland: Bureau of Environmental Services	414	Linfield University
933	City of Portland: Bureau of Technology Services	117	Lithia & Driveway
Bulk	City of Portland: Bureau of Transportation	857	LMC Construction
Bulk	City of Portland: Urban Forestry		M
Bulk	City of Portland: Water Bureau	331	Made in Old Town
102	City of Portland: We Are Better Together, Bureau of Human Resources, Bureau of Planning & Sustainability	113	Maletis Beverage
757	Clackamas Community College - Horticulture	348	Marquis Companies & Consonus Healthcare & AgeRight
110	Clackamas Community College - Industrial Technology and Automotive	931	MECOP, Inc.
114	Clackamas Community College - Wildland Fire and GIS	524	Metro
212	Coates Kokes	511	Mt. Hood Community College
254	College of Pharmacy, Oregon State University	218	Mt. Hood Community College- Arts/Creative Instruction
520	CREW Portland	924	Mt. Hood Community College- Automotive, Engineering, Machine Tool, Mechatronics and Welding
	D	424	Mt. Hood Community College- Business and Computer Information Systems
Bulk	Daimler Truck North America	255	Mt. Hood Community College- Healthcare Instruction
918	Danner	830	Mt. Hood Community College- Natural Resources and Fisheries
	E	315	Mt. Hood Kiwanis Camp
834	Earth Advantage & EnerCity Collaborative	325	Multnomah County
416	ECMC The College Place Oregon		N
	F	866	NARI Pacific NW
848	Fortis Construction Inc.	868	National Asssocation of Minority Contractors
346	Fresenius Medical Care	864	NECA-IBEW Electrical Training Center
342	Frontier Senior Living	856	Northwest College of Construction
	G	203	Northwest College School of Beauty
530	Gee Automotive Companies	836	NW Natural
248	Genentech		O
1166	Glacier NW	116	Oak Harbor Freight Lines
763	Glaziers Apprenticeship	849	OEG, Inc.
323	Greater Oregon Behavioral Health, Inc	1050	Oh planning+design, architecture
752	GreenWorks PC	444	OHSU Center for Learner Diversity and Inclusion
919	Gunderson Marine LLC	453	OHSU Graduate Programs in Human Nutrition
	H	451	OHSU Knight Cancer Institute Cancer Research
412	HECC/Office of Student Access & Completion		
108	Hillsboro Aero Academy		
Bulk	Hillsboro Fire & Rescue		

	Training & Education	1006	Portland Community College: Geography & GIS Technologies
Bulk	OHSU Knight Cancer Institute Community Outreach and Engagement – Mobile Outreach Team	223 202	Portland Community College: Theater & Music Portland Fashion Institute
450	OHSU MD Program	Bulk	Portland Fire & Rescue
354	OHSU Pharmacy Tech Program	629, 728	Portland General Electric
454	OHSU Physician Assistant Program	101	Portland Parks & Recreation
447	OHSU Radiation Therapy Program, OHSU Medical Physics Program	1001	Portland Public Schools: Office of Technology & Information Services
455	OHSU School of Dentistry Student Admissions	418	Portland State University: Admissions
449	OHSU School of Nursing	426	Portland State University: Business
355	OHSU Talent Acquisition	1005	Portland State University: Civil&Environmental Engineering; Mechanical&Materials Engineering
452	OHSU-PSU School of Public Health		Portland State University: Electrical&Computer Engineering; Computer Science
448	OHSU/OIT Medical Laboratory Science	1003	Portland Timbers / Providence Park
Bulk	OHSU/OIT Paramedic and EMTs		Printing Industries Association
115	Omega Morgan	311	Professional Land Surveyors of Oregon
508	OnPoint Community Credit Union	222	Providence Health
319	Options Counseling and Family Services	966	
1152	Oregon & S. Idaho Laborers Employers Training Trust (LiUNA Local 737)	243	R
442	Oregon Area Health Education Center (AHEC)	1056	R&H Construction
367	Oregon Army National Guard	759	RDO Equipment Co.
249	Oregon Bio	769	Regional Training Center
352	Oregon Care Careers	917	Reser's Fine Foods
859	Oregon Chapter of the American Society of Landscape Architects	350	RISE Partnership
		1066	RiverBend Materials
321	Oregon CTE Student Leadership Foundation	957	RJ Ramos
929	Oregon Cybersecurity Center of Excellence		S
518	Oregon Employment Department Paid Leave	204	Shadow Machine
523	Oregon Entrepreneurs Network	955	Skanska USA
206	Oregon Film: Koerner Camera Systems	1002	Society of Women Engineers (SWE)
317	Oregon Humane Society	420	Southern Oregon University
446	Oregon Institute of Technology	1004	State of Oregon DEQ Environmental Laboratory and State Public Health Laboratory
514	Oregon Institute of Technology		Summit Salon Academy
1007	Oregon Institute of Technology	200	Sumner College
445	Oregon National Primate Research Center	253	Sundt Construction
430	Oregon Restaurant and Lodging Association	952	
729	Oregon Solar + Storage Industries Association		T
526	Oregon State Bar	956	Tapani Inc.
831	Oregon State University College of Forestry/ College of Earth, Ocean, and Atmospheric Sciences (CEOAS)	912	The Boeing Company
		528	The Real Life
930	Oregon State University: College of Engineering	109	Transportation Security Administration
224	Oregonian Media Group	Bulk	TriMet
	P	527	Tualatin Hills Park & Recreation District
828	Pacific Northwest Clean Water Association	366	U
731	Pacific Power	767	U.S. Marine Corps
250	Pacific University	515	UA Local 669 Fire Sprinkler Fitters JATC
922	PCC Electronics Engineering Technology	422	Umpqua Bank
920	PCC Machining Manufacturing Technology	210	University of Oregon
927	PCC Microelectronics Technology	214	UPLIFT Leadership
921	PCC Oregon Manufacturing Innovation Center	369	Upswell
443	Peacehealth	365	US Army
313	Pedalheads Bike Camps Inc.	368	US Army ROTC
968	Performance Contracting, Inc.		US Navy
858	POIC	914	V
Bulk	Port of Portland	1060	Vigor Industrial LLC
309	Portland Community College	252	Viking Automatic Sprinkler Company
240	Portland Community College- Healthcare & Emergency Professions	961	Virginia Garcia Memorial Health Center
Bulk	Portland Community College- Welding	226	Walen Construction
410	Portland Community College: Career Pathways and STEP Program	431	W
928	Portland Community College: Computing & Engineering		Wieden+Kennedy
			Y
			YMCA of Columbia-Willamette

The green jobs of a bright future

The green jobs of the future are here at PGE. We're proud to offer careers that combine cutting-edge technology with a commitment to sustainability. Whether you're interested in making the grid smarter or improving the environment, PGE is where you'll find the green jobs of tomorrow.



Stop by our All Electric Home at the Portland Workforce Alliance for more information.

Portlandgeneral.com/about/careers





**Do meaningful work.
Enjoy what you do.**

When it comes to your future career, the Port of Portland offers a world of possibilities. Whether you have a passion for technology, a knack for public speaking, or a desire to protect and serve—the Port might be looking for someone like you. Stop by our area and learn more about what the Port has to offer.



Our employees—together with our partners, customers and community—drive meaningful change. See how we move with purpose, connecting people with powerful opportunities and creating value for our region.

Visit portofportland.com/careers or scan the QR code to view current job opportunities.





WE BELIEVE IN YOU

Prosper Portland is proud to sponsor the NW Youth Careers Expo. We support youth and adult workforce development programs for diverse Portlanders, including career training and work opportunities in the technology industry. We're here to help you connect and compete in the regional economy.

For more information, visit:
prosperportland.us/workforce

Connect with us:



**PROSPER
PORTLAND**
Building an Equitable Economy



CONSTRUCTION CRAFT LABORERS



MINIMUM QUALIFICATIONS

- Be at least 18 years old
- Have a high school diploma, GED, or NCRC Bronze Level Score

WHY JOIN?

- Life-long career training & learning opportunities
- College Credit Options
- 2 Year Program
- Benefits (Family Healthcare and Pension)
- Earn living wages

EARN WHILE YOU LEARN

Contact us at or scan the QR Code:



LiUNA!
Feel the Power

17242 NE Sacramento St. Portland,
Oregon, 97230

apprenticeship@osilett.org 541.745.5513

EEO PLEDGE: Oregon-Southern Idaho Laborers-Employers Training Trust shall not discriminate against apprenticeship applicants or apprentices based on race, color, religion, national origin, sex (including pregnancy and gender identity), sexual orientation, genetic information, or because they are an individual with a disability or a person 18 years old or older. Oregon-Southern Idaho Laborers-Employers Training Trust shall take affirmative action to provide equal opportunity in apprenticeship and shall operate the apprenticeship program as required under the Oregon Plan for Equal Employment Opportunity in Apprenticeship and Title 29 of the Code of Federal Regulations, part 30.



Make the world a healthier and better place

Launch your career with an organization that values diverse perspectives and the power of positive change.

Legacy Health is a locally owned nonprofit committed to improving the health and well-being of our patients, communities and people.

Featuring a wide range of inspiring career opportunities, Legacy is a place where you can make a meaningful impact, a difference in people's lives.

Take the first step towards a fulfilling career while helping shape the future of health care.

Create your legacy with us: legacyhealth.org/jobs



We're invested in you!

At Umpqua Bank, we know that better tomorrows start with today's youth. That's why we're proud to sponsor the NW Youth Careers Expo. Our internships and entry-level opportunities help shape students like you into leaders for the future.

Why Join Umpqua Bank?

- » **Real-world experience:** Gain practical skills through internships and starting roles
- » **Career growth:** Enjoy access to a tailored career development pathway
- » **Mentorship:** Receive guidance from seasoned professionals
- » **Collaborative environment:** Thrive in a supportive work culture
- » **Networking opportunities:** Connect with industry leaders
- » **Community impact:** Get involved through a robust volunteer program



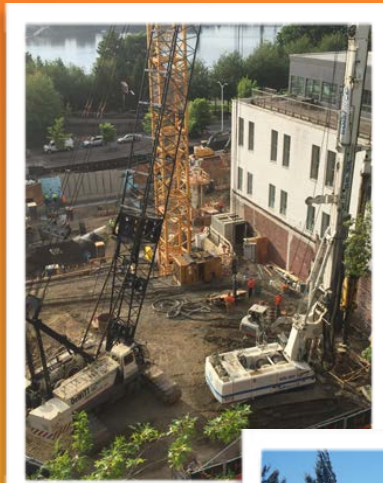
UmpquaBank.com

Member FDIC Equal Housing Lender 

YOU MAY ASK YOURSELF, WHAT DOES AN OPERATING ENGINEER DO?

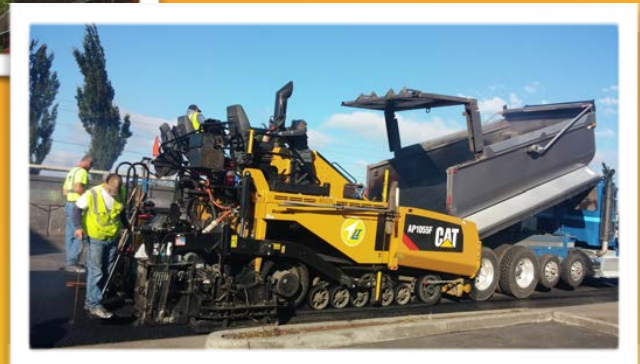


EARN AS YOU LEARN



FACTS: Start off earning 80% of Journey worker wages
Starting wage \$38.40- \$42.04 per hour
Minimum requirements 18 years of age High School Diploma or GED
AVERAGE JOURNEY WORKER ANNUAL INCOME \$50,000 - \$70,000

WWW.IUOE701.COM
WWW.OETRAINING.ORG



Your *SOMEDAY* is here

Dreams come in every shape and size. And no matter who you are or where you want to go, we're here to support you. So whether you're seeking an advanced degree, want to master a trade, or you'd just like to talk to somebody about where to go next, Portland Community College is here to help you make it happen.

- ◆ Choose from over 100 academic and career training programs
- ◆ Spend around 50% less than the cost of a public university*
- ◆ Explore scholarships, financial aid, internships and paid training
- ◆ Access to advising, career-counseling and support
- ◆ Apply for free in under 20 minutes

Start your
SOMEDAY NOW,
pcc.edu/apply



*Estimated 2024-25 cost of attendance for a full-time, resident student (12-18 credits per term). Calculation based on publicly available recruitment materials. For up-to-date costs, visit pcc.edu/tuition.

HIGH SCHOOL JOURNALISM INSTITUTE



Learn more at
oregonhsji.org

The High School Journalism Institute is a unique opportunity to experience real-world reporting with expert mentorship. Discover what a career in journalism is all about during this no-cost, week-long program at Oregon State University campus in Corvallis.

Selected students will benefit from hands-on collaboration with journalists from The Oregonian and other local news organizations to report and produce stories to be featured in The Oregonian newspaper and on OregonLive.com.

Lodging and meals are provided, and students will work in the newsroom of OSU's award-winning student newspaper, The Barometer. Students who complete the program will also earn a college credit.

Is a career in the Fourth Estate your path? This once-in-a-lifetime experience may help you decide.

The Oregonian



Oregon State University
Precollege Programs

Don't just work a job, work joyfully



Looking for a job with purpose? Join the team at a Frontier Senior Living community.

Career benefits include:

- Training and certification programs
- Medical, dental and vision coverage
- Supplemental disability and critical illness coverage
- 401k match
- Employee health and wellness discounts
- Flexible hours
- Amazing staff and patients

Visit us online & apply today!

FrontierMgmtCareers.com



WE GIVE YOU THE SKILLS. YOU DECIDE WHERE THEY TAKE YOU.

Make the most of your potential with training, tools, and mentorship. Develop your skill set while pushing your abilities to the next level.

DECIDE TO LEAD.

ROTC GOARMY.COM/ROTC/PWA

©2025 U.S. ARMY. PAID FOR BY THE U.S. ARMY.



NW Natural is proud to support Portland Workforce Alliance

Why do we feel that investing in the community is so important?

We believe that if we put the time in to help our neighbors—through philanthropy, volunteering, or hard work—the rewards are tenfold. Together with numerous charitable organizations, we're working to make this the kind of place we can call home.





BECOME A NURSE.

No Prereqs Required
BSN. LPN. RN-BSN.

BSN PROGRAM
32 MONTHS

LPN PROGRAM
13 MONTHS

S | SUMNER[®] COLLEGE

Dream It. Do It.[®]

www.sumnercollege.edu



PORTLAND
503-972-6230



BEND
541-728-8192

DRIVE ON TO YOUR FUTURE

Join the team at the Tonkin Family of Dealerships

Tonkin
FAMILY OF DEALERSHIPS
A GEE AUTOMOTIVE COMPANY




geeautomotive.com/careers

BUILD YOUR FUTURE.



HOFFMAN CONSTRUCTION COMPANY



HOFFMANCORP.COM







ALL TOGETHER NOW

Kaiser Permanente is proud to support Portland Workforce Alliance's mission of providing students with real-life work experiences and career-learning opportunities in partnership with local high schools.



All plans offered and underwritten by Kaiser Foundation Health Plan of the Northwest, 500 NE Multnomah St., Suite 100, Portland, OR 97232. ©2024 Kaiser Foundation Health Plan of the Northwest



Curiosity is a prerequisite.

Challenge. Be Intentional.

Have fun building stuff.

Grow. Listen.

Check your ego at the door.

Make an impact.



FORTIS
CONSTRUCTION INC.



**ANDERSEN
CONSTRUCTION**

PORTLAND
SEATTLE
EUGENE
BOISE

BUILDER OF CHOICE

WWW.ANDERSEN-CONST.COM



Skanska shapes the Portland community by building what matters.

If you are interested in a career in construction management or the building trades, please scan the QR code below.



CCB#153980

SKANSKA



BUILD YOUR FUTURE



INNOVATIVE | REWARDING | FUN

- One of the leading specialty contractors in the U.S.
- Training and career development programs
- Employee owned
- Competitive salary and unmatched benefits

APPLY TODAY AT PCG.COM/UNIVERSITY-RECRUITING.





design that cultivates
diversity &
inclusion
through
collaboration &
community

Oh

OH PLANNING+DESIGN,
ARCHITECTURE
www.ohpd.net



ENERGIZE YOUR *future*

At Pacific Power, a division of PacifiCorp, we have a variety of career opportunities to expand your skills at a leading energy company. See job listings and apply at PacificPower.net/Careers.

PACIFIC POWER
POWERING YOUR GREATNESS

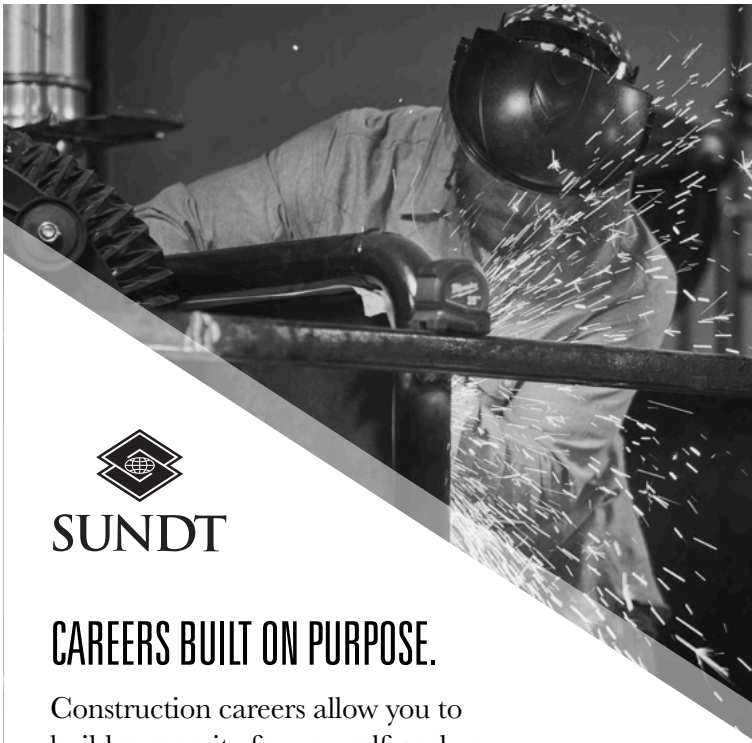
©2025 Pacific Power

Learn More About OEG!

**Proud Supporter of
the 2025 NW Youth
Careers Expo**

CCB #203/OEG*II*823NF
oeg.us.com

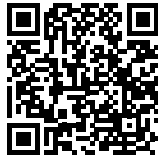




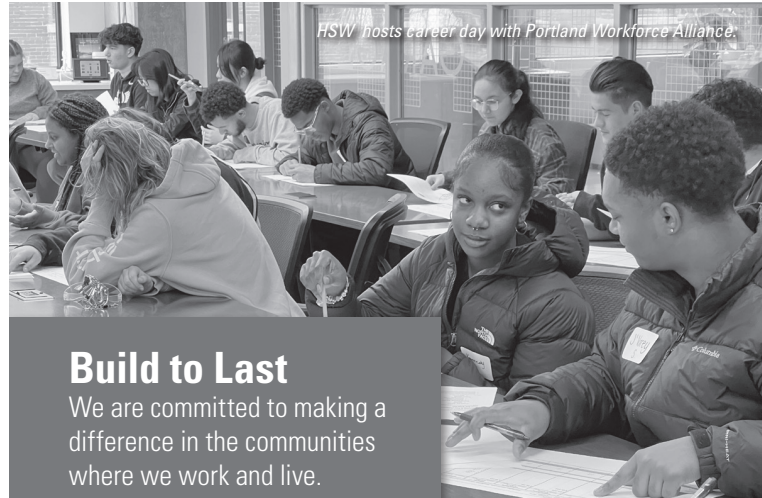
SUNDT

CAREERS BUILT ON PURPOSE.

Construction careers allow you to build prosperity for yourself and your community, leaving an impact that lasts for generations.



LEARN MORE AT SUNDT.COM



Build to Last

We are committed to making a difference in the communities where we work and live.

We want our lasting impression, our legacy, to be one that improves, enhances, and connects our communities. The five tenets of our Build to Last mission serve as the foundation that we live and work by:

Lean, Expert, Trusted, Safe, Sustainable.

Learn more about us
www.balfourbeattyus.com/portland
Follow us on social media
@balfourbeattyus



intel®

**Innovating
and Investing
in Oregon
since 1974.**



**Intel.com/
Oregon**



**NORTHWEST
YOUTH
CAREERS
EXPO**

PARTICIPATING SCHOOLS

21st annual NW Youth Careers Expo: March 19, 2025

*As of 3/10/2025

6,000+
students

80+
high schools

16+
counties

MULTNOMAH COUNTY

- Centennial School District**
 - Centennial High School
- David Douglas School District**
 - David Douglas High School
 - David Douglas Community Transition Program
- Portland Public Schools**
 - Alliance High School at Kenton and Meek
 - Benson Polytechnic High School
 - Cleveland High School
 - Franklin High School
 - Grant High School
 - Ida B. Wells High School
 - Jefferson High School
 - Lincoln High School
 - McDaniel High School
 - Metropolitan Learning Center
 - Mt. Scott Learning Center
 - Roosevelt High School
 - West Sylvan Middle School
 - Youngson HS at Pioneer
- Gresham-Barlow School District**
 - Gresham High School
 - Metro East Web Academy
 - Sam Barlow High School
- Parkrose School District**
 - Parkrose High School
- Reynolds School District**
 - Reynolds High School
 - Reynolds Learning Academy
- Private, Alternative & Community Programs**
 - Central Catholic High School
 - Friends of the Children - Portland
 - Helensview
 - Northwest Family Services
 - Portland YouthBuilders
 - Rivercrest Academy
 - Rosemary Anderson Prep
 - Springdale-PIVOT Job Corps Center Columbia County
- Rainier School District**
 - Rainier Junior Senior High School
- St. Helens School District**
 - St. Helens High School
 - Plymouth High School
- Clatskanie School District**
 - Clatskanie Middle High School

CLACKAMAS COUNTY

- Canby School District**
 - Canby High School
- Estacada School District**
 - Estacada High School
- Gladstone School District**
 - Gladstone High School
- North Clackamas School District**
 - Adrienne C. Nelson High School
 - Clackamas High School
 - Clackamas Middle College
 - Milwaukie High School/ Milwaukie Academy of the Arts
 - New Urban High School
 - PACE Teen Parent Program
 - Rex Putnam High School
- Oregon City School District**
 - Bridges To Independence - OCSD62
- West Linn-Wilsonville School District**
 - The Judy Heumann Center- Adult Transition Services
 - West Linn High School
 - Wilsonville High School
- Private, Alternative & Community Programs**
 - Alliance Charter Academy
 - Grand View Christian Academy
 - North Clackamas Christian School
 - Spring Mountain Christian Academy
 - Summit Learning Charter

CLATSOP COUNTY

- Knappa District**
 - Knappa High School

GRANT COUNTY

- Prairie City School District**
 - Oregon Connections Academy

HOOD RIVER COUNTY

- Hood River County School District**
 - Hood River Valley High School

JEFFERSON COUNTY

- Culver School District #4**
 - Culver High School

LANE COUNTY

- Private, Alternative & Community Programs**
 - New Avenues for Youth

LINN COUNTY

- Santiam Canyon School District**
 - Santiam Jr/Sr High School

MARION COUNTY

- Gervais School District**
 - Gervais High School
- Salem-Keizer Public Schools**
 - Early College High School
 - Migrant Education Program
 - South Salem High School

Private, Alternative & Community Programs

- Chemawa Indian High School
- Oregon Charter Academy
- Willamette Career Academy

POLK COUNTY

- Central School District 13j**
 - Central High School
- Dallas School District**
 - Dallas High School

TILLAMOOK COUNTY

- Tillamook School District**
 - Tillamook High School

Neah-Kah-Nie School District

- Neah-Kah-Nie High School

UMATILLA COUNTY

- Pendleton School District**
 - Nixyaawii Community School

WASCO COUNTY

- North Wasco School District**
 - Innovations Academy
 - The Dalles High School

- South Wasco School District**
 - South Wasco County High School

WASHINGTON COUNTY

- Banks School District**
 - Banks High School
- Beaverton School District**

- Beaverton High School
- Community School
- Beaverton Academy of Science and Engineering
- Mountainside High School
- Southridge High School
- Westview High School

Hillsboro School District

- Century High School
- Community Transition Services Hillsboro School District | Oak Street Campus
- HSD - Independent Transition Program
- Liberty High School

Northwest Regional Education Service District

- Cascade Academy
- Pacific Academy

Tigard-Tualatin School District

- Creekside Community High School
- Tigard High School
- Tualatin High School

YAMHILL COUNTY

- Amity School District**
 - Amity High School
- Dayton School District**
 - Dayton High School

Private, Alternative & Community Programs

- Grand Ronde Youth Education

WASHINGTON STATE

- Evergreen Public Schools**
 - Archway Academy
- Stevenson-Carson School District**
 - Stevenson High School

- Trout Lake School District**
 - Trout Lake School

- Vancouver Public Schools**
 - GATE Transition Program
 - Hudson's Bay High School

- Wahkiakum School District**
 - Wahkiakum School District Schools

- Other Programs**
 - Firm Foundation Christian School
 - Rooted School Vancouver
 - Seattle Christian School
 - Washington State School for the Blind





PWA educates students about career opportunities to empower young people on their career paths while helping employers connect with their future workforce.

OUR WORK

PWA works with high schools, employers, colleges and training centers to help students develop **college-and-career aspirations** and skills. With our partners, we provide nearly 9,000 career-learning experiences a year.

NW YOUTH CAREERS EXPO

The annual Careers Expo features top employers and draws students from Oregon and SW Washington. More than 5,000 students and educators from 75+ high schools attended the most recent in-person Expo, and our 230+ exhibitors included colleges, apprenticeship training centers and the **region's leading employers** who offer mock interviews, demos and career connections.

"It made me consider different career paths, and it made me realize that there are lots of opportunities out there!"

- Expo Student Attendee, 2024

CAREER DAYS

We work with partners to host about 30 Career Days annually, connecting hundreds of students to leading employers at their workplaces for experiential learning. Volunteers share their insights and provide coaching on the skills and education needed to thrive in their work. Many Career Days involve projects or hands-on learning.

MENTORSHIPS & IN-DEPTH EXPERIENCES

We work with partners to connect 250 students annually with free after-school mentorships and other experiences. Our goals are to strengthen and diversify the local talent pipeline, empower underrepresented students and help young people develop their **confidence, knowledge and networks**. These experiences include:

- **PWA Future of Nursing:** In-depth college-and-career experience in healthcare.
- **PWA Youth Impact Council:** Advisory role with skills building and career coaching.
- **PWA Creative Careers:** Exploratory mentorship emphasizing creativity, business and design.
- **PWA Summer Career Academy:** Career empowerment and skills development for female and non-binary students.
- **ACE Mentor Program:** This separate nonprofit staffed by PWA focuses on careers in architecture, construction and engineering in a project-based team setting.

CLASSROOM AND BEYOND

PWA assists career coordinators with on-campus and virtual activities such as career fairs and mock interviews. We collaborate with fellow nonprofits serving underrepresented youth. We link teachers with employers to help show students the connections between the **classroom and real life**. PWA also facilitates job shadows, summer work experiences and volunteer opportunities.



THE IMPACT

8,800+

career-learning experiences



75+

high schools served



1,400+

employer volunteers

1,880+

mock interviews & career workshops

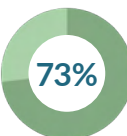
30+ CAREER DAYS WITH LEADING EMPLOYERS



gained insights that will help them in any career

320+

educators supported



would consider working at that company someday

100%

rated their career day **Excellent or Good**

*2023-24 data



PORTLANDWORKFORCEALLIANCE



@PWORKFORCEA

**NORTHWEST
YOUTH
CAREERS
EXPO**

2025 EXPO SPONSORS

21st annual NW Youth Careers Expo: March 19, 2025

DIAMOND



PLATINUM



UMPQUA BANK



The Oregonian

GOLD



**KAISER
PERMANENTE**



SILVER



Howard S. Wright
a Balfour Beatty company



SKANSKA

TRIOMET



BRONZE



PORTLANDWORKFORCEALLIANCE

PWORKFORCEA